


Digital Rod Displays – Installation Guide

Revision date: 16/12/2019



Instructions

 Please read all instructions before you start.

Preparation

The first thing to check is if there is a false/suspended ceiling in place; if there is then the top fixings must be screwed into the real ceiling above this. If there is a false ceiling the transformer can be hidden here, if there isn't one then this can be screwed to the real ceiling or to the wall near the floor.

Step 1

Mark 2 x points on the top (ceiling) and 2 x points at the bottom (the floor or window sill) that are 444mm apart. These will be the center mounting points for your rods so need to be perfectly vertical from one another. Drill pilot holes if necessary.



Step 2

Unscrew the bottom fittings from the top and bottom fixings:

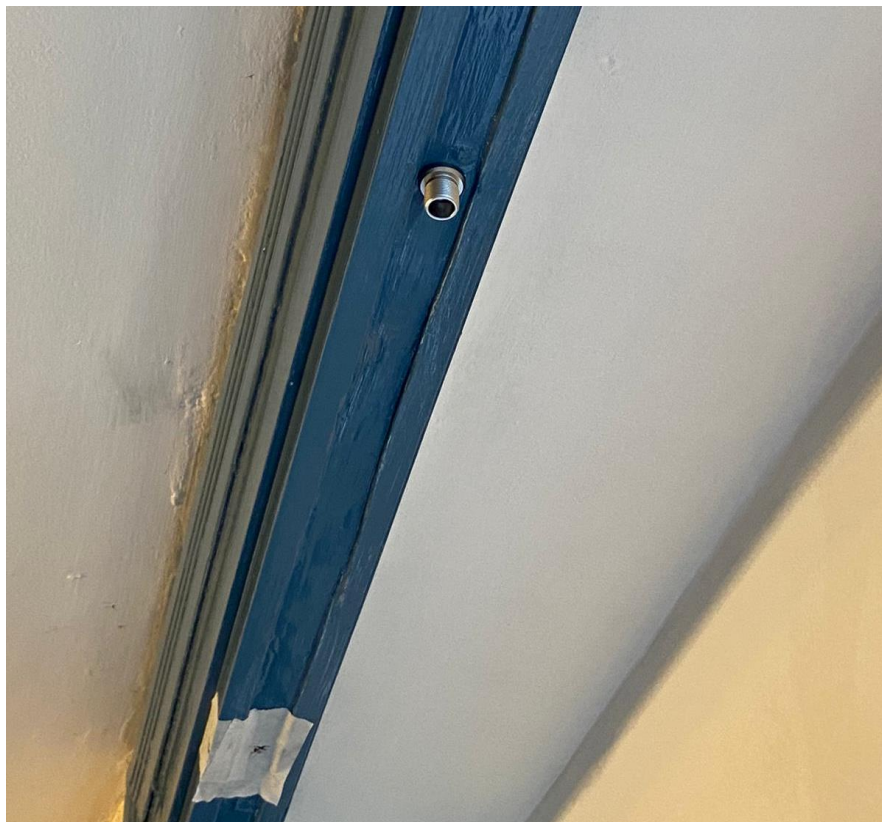
Bottom Fixing



Top Fixing



Then screw all 4 of these into the pilot holes using self-tapping screws.



NOTE: if you are mounting to a metal surface please use the plastic fittings from the rod isolator kit provided.



Step 3

Screw the both sets of 1.5 meter rods together to make two 3 meter lengths. Measure the distance from the top (ceiling) to the bottom (the floor or window sill). Cut the 3 meter rods to the correct size, taking off an extra 30mm (including the threaded end).

i *CAUTION: please be sure to cut the end with the internal thread NOT the threaded end as this is needed to screw into the bottom fixing.*

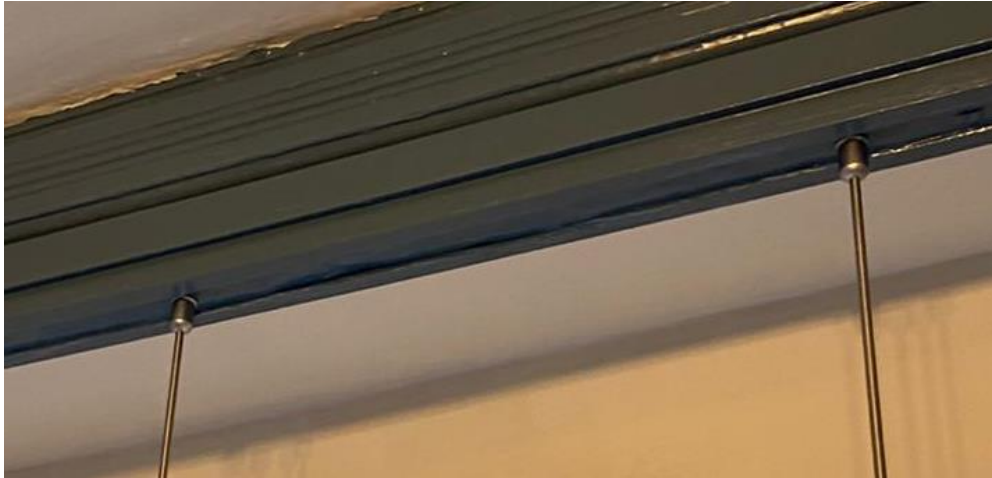
Step 4

From the bottom fixing slide the cover, spring and brass collar onto the rod then screw the brass collar in place 16mm from the end of the rod (using the small 1.5mm hex key provided).



Step 5

Screw the cover for the top fixings onto the fittings that are already in place then screw the top of the rods (the threaded end) into the top fixings.



Step 6

Insert the bottom part of the rods into the bottom fittings then screw in place using the cover.



Step 7

Using the 3mm hex key provided, unscrew the hex grub screws from the side fixings attached to the Rod Displays.



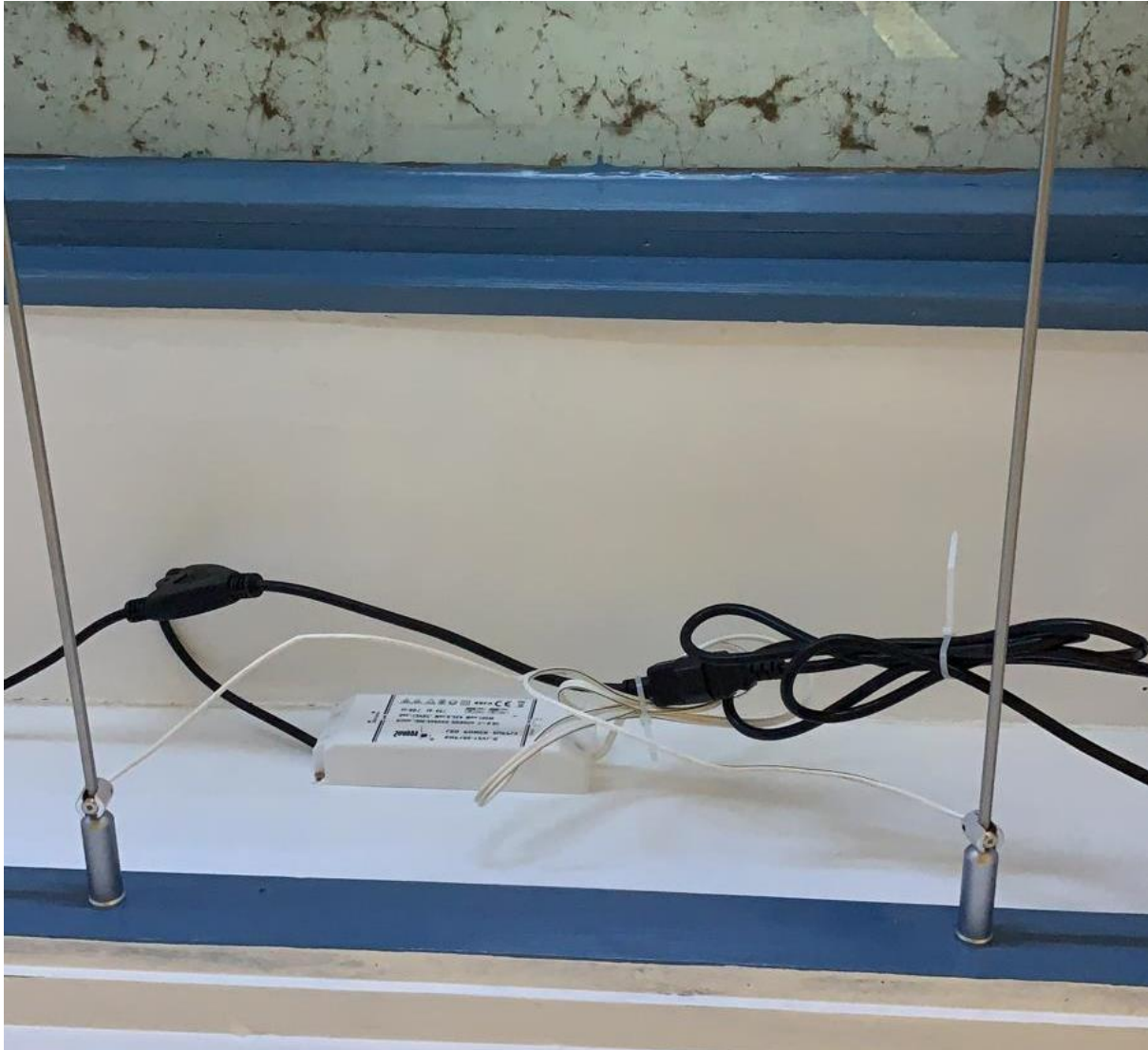
Mount the Rod Displays onto the rods and screw the hex grub screws back into place.

i *CAUTION: take extra care not to cross-thread the grub screws while doing this.*



Step 8

Unscrew the hex grub screws from the rod transformer connectors, mount these to the rods then fix in place using the 3mm hex key. Where these are mounted (top or bottom) will depend on where you are placing the transformer. Unscrew the hex grub screws on the side of the rod transformer connectors (using the 2.5mm hex key provided), insert the cable from the transformer then secure into place by screwing the grub screws back in.



Finally you can hide the transformer in the false ceiling or by screwing it to the real ceiling (or screwing it to the wall/window sill if powering from the bottom as shown above). Then plug the transformer into the mains socket.

FAQ

One of my screens is flashing, what should I do?

If a screen is flashing disconnect transformer from the mains then unscrew the 4 x hex grub screws of the top side connections of the screen in question. Then screw them back in making sure they are not cross-threaded and the connections are secure.

