

32" High Brightness
Monitor - 1500cd/m²



eclipse digital

Overview

High Brightness Panel

1500cd/m² makes sure this display will always be seen whatever the weather. Over 5 times brighter than that of a standard domestic television to improve the displays image clarity.

LED Backlight

Improves brightness and contrast as well as improving their lifespan and reducing their power consumption. Unlike other forms of light this technology is mercury free; making it even more eco-friendly. The panel and backlight have a lifespan in excess of 50,000 hours.

Plug and Play

Plug and Play is the easiest and most simple way to upload content to the screen. Simply load images and videos on a USB stick, insert in the display. Wait for your content to copy over and then remove. Your images and videos will now play in a continuous loop

Integrated Android Media Player

The integrated Android Media Player allows for super fast updates. If required you can also run third party Digital Signage software via the Android PC board.



Commercial Grade

Designed for use in commercial applications this screen can run 24/7. No external buttons or controls to avoid tampering.

Attach Devices

If you want to use the screen as a monitor you can attach devices via HDMI and VGA.



Advanced Temperature Control

Designed to run 24/7 in constant use the display has an advanced temperature control system to keep it running at the optimum temperature no matter the environment.

Network Upgrade

The screen can be upgraded to become a network screen that unlocks a host of new features including remote updates and multiple media zones.

RS-232 Control

Once your screens are connected via RS-232 you can control, scale and customise all of your displays remotely over short and long distances.

Portrait/Landscape Orientation

The screen can be used in either a landscape or portrait orientation depending on your requirement.





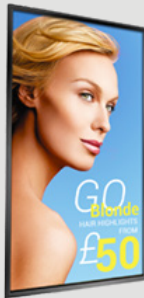
Window Displays

Brightness is paramount when using outward facing screens, these displays use commercial grade Ultra High Brightness panels (1500 cd/m^2); more than 5 times brighter than a standard home TV to allow easy readability in window displays.



Plug and Play

The High Brightness Professional Monitors come with a built in HD Android media player, allowing you to update them using a USB memory stick. Load your pictures and videos onto a USB memory stick then insert it into the display, which will copy the files into its internal flash memory. Once you remove the memory stick the screen will then start playing the pictures and videos in a continuous loop. They can also be updated remotely by upgrading your screen to be networked.



Temperature Control

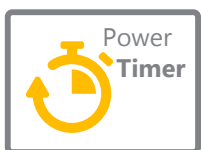
The internal air-conditioning system allows the screens to be in constant use in an outward facing window. Internal fans keep their panels and other internal components at the optimum working temperature; ensuring a long and reliable life for your screens.





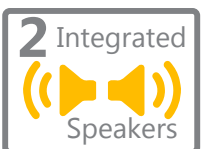
Features

Environmentally Friendly Power Timer



This allows for reduced power usage by automatically powering off in hours that the displays are not required. You can set daily On/Off times for your displays.

Built-in Speakers



The display has two integrated slimline speakers for applications that involve an audio element.

24/7 Usage



Built with commercial grade panel and components these displays are designed to run 24/7 in constant use; unlike domestic screens. The panel also has a lifespan of over 50,000 hours of continuous use. They can also be used in landscape or portrait orientation.

Optional Network Upgrade



For a small charge you can also upgrade your screen to be networked, allowing you to remotely update your screen via LAN, WiFi or 3G.

Panel	Display Size		32 Inch
	Resolution		1920x1080
	Display Area (mm)		698.4x392.85
	Aspect Ratio		16:9
	Brightness (cd/m²)		1500
	Colour		16.7M
	Viewing Angle		178°
	Contrast Ratio		4000:1
Audio	Speaker Type		2W, 5Ω (x2)
AV Inputs	Video		HDMI, VGA
	Audio		Audio Socket (3.5mm)
Power	Power Consumption (W)		180
	Input Voltage		AC110~240V (50Hz~60Hz)
Mechanical	Unit Size (WxHxD mm)		762x458x78.5
	VESA Holes (mm)		400x200
	Net Weight (Kg)		15.2
	Gross Weight (Kg)		18.25
	Package Size (WxHxD mm)		905x604x234
Environmental	Operating Temperature		0°C to 50°C
	Storage Temperature		-30°C to 60°C
	Operating Humidity		10% to 80%
	Storage Humidity		5% to 95%
Computer	Internal Media Player	Media Formats	Video (MPG, AVI, MP4, RM, RMVB, TS), Audio (MP3, WMA), Image (JPG, GIF, BMP, PNG)
		Media Resolution	1920x1080/1080x1920
		Internal Memory	6GB
		CPU	Duel-Core Cortex-A9 @1.6GHz
		GPU	Mali-400 MP4 @400MHz
		RAM	1GB DDR3
		ROM	8GB NAND
		USB	USB2.0 HOST (x2)
		LAN	10/100M Ethernet (Network version screen only)
		Wi-Fi	802.11b/g/n (Network version screen only)
		OS	Android 4.2.2
		Graphic Engine	OpenGL ES 1.1/2.0, OpenVG 1.1
		Special Features	Images, Videos, Audio, Scrolling Text Message, On/Off Timer, On Screen Clock, Media Rotation
Accessories	Included		Wall Mount, Scheduling Software, Remote Control, Key, User Manual
	Optional		Network Upgrade, Touch Screen Upgrade, Special Wall Mount, Floor Stand/Trolley, Ceiling Mount, Table Stand

Technical Drawing:

Errors and omissions excepted

