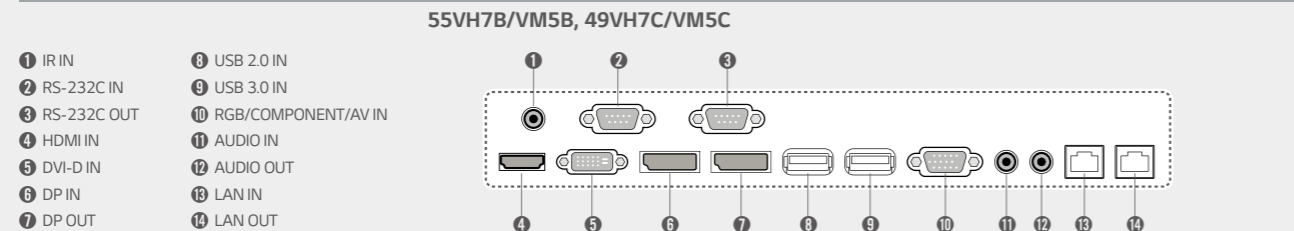


Specifications

		49VM5C
PANEL	Screen Size	49"
	Panel Technology	IPS
	Aspect Ratio	16 : 9
	Native Resolution	1,920 x 1,080 (FHD)
	Brightness	500 cd/m ²
	Contrast Ratio	1,300:1
	Dynamic CR	500,000:1
	Viewing Angle (H x V)	178 x 178
	Response Time	8ms (G to G)
	Surface Treatment	Hard coating (3 H), Anti-glare treatment of the front polarizer (Haze 10 %)
CONNECTIVITY	Guaranteed Operating Hour	24 Hours
	Orientation	Portrait & Landscape
	Input	HDMI, DP, DVI-D, OPS, Audio, USB 2.0, USB 3.0, RGB
	Output	DP, Audio
PHYSICAL SPECIFICATION	External Control	RS232C, RJ45, IR Receiver
	Bezel Color	-
	Bezel Width	0.9 mm (Top/Bottom/Left/Right even bezel) / 1.8 mm *B to B : Panel Bezel + Panel Bezel
	Monitor Dimension (W x H x D)	1,075.6 x 605.8 x 86.2 mm
	Weight (Head)	17.5 kg
	Carton Dimensions (W x H x D)	1,214 x 775 x 263 mm
SPECIAL FEATURES	Packed Weight	23.2 kg
	VESA™ Standard Mount Interface	600 x 400 mm
ENVIRONMENTAL CONDITIONS	Operating Temperature Range	0 °C to 40 °C
POWER	Operating Humidity Range	10 % to 80 %
	Power Supply	100-240V~, 50/60Hz
POWER CONSUMPTION	Power Type	Built-In Power
	Typ.	120 W
STANDARD (CERTIFICATION)	Smart Energy Saving	70 W
	Safety	UL / cUL / CB / TUV / KC
	EMC	FCC Class "A" / CE / KCC
MEDIA PLAYER COMPATIBILITY	ErP / Energy Star	NA / Yes (Energy Star 7.0)
	OPS Type Compatible	Yes
SOFTWARE COMPATIBILITY	External Media Player Attachable	Yes (MP500/MP700)
	SuperSign W/Lite	Yes
ACCESSORIES	SuperSign C	Yes
	Basic	Remote controller, Power cable, DP cable, Manual, IR receiver, RS-232C cable, LAN cable, Guide bracket, Screws
	Optional	Wall mount (Landscape: WM-L640V, Portrait: WM-P640V), OPS kit (KT-OPSA), HDBaseT (EB-B100)

Connectivity



Download LG Commercial Display Mobile App



Learn more www.lg.com/b2b or www.lgcommercial.com

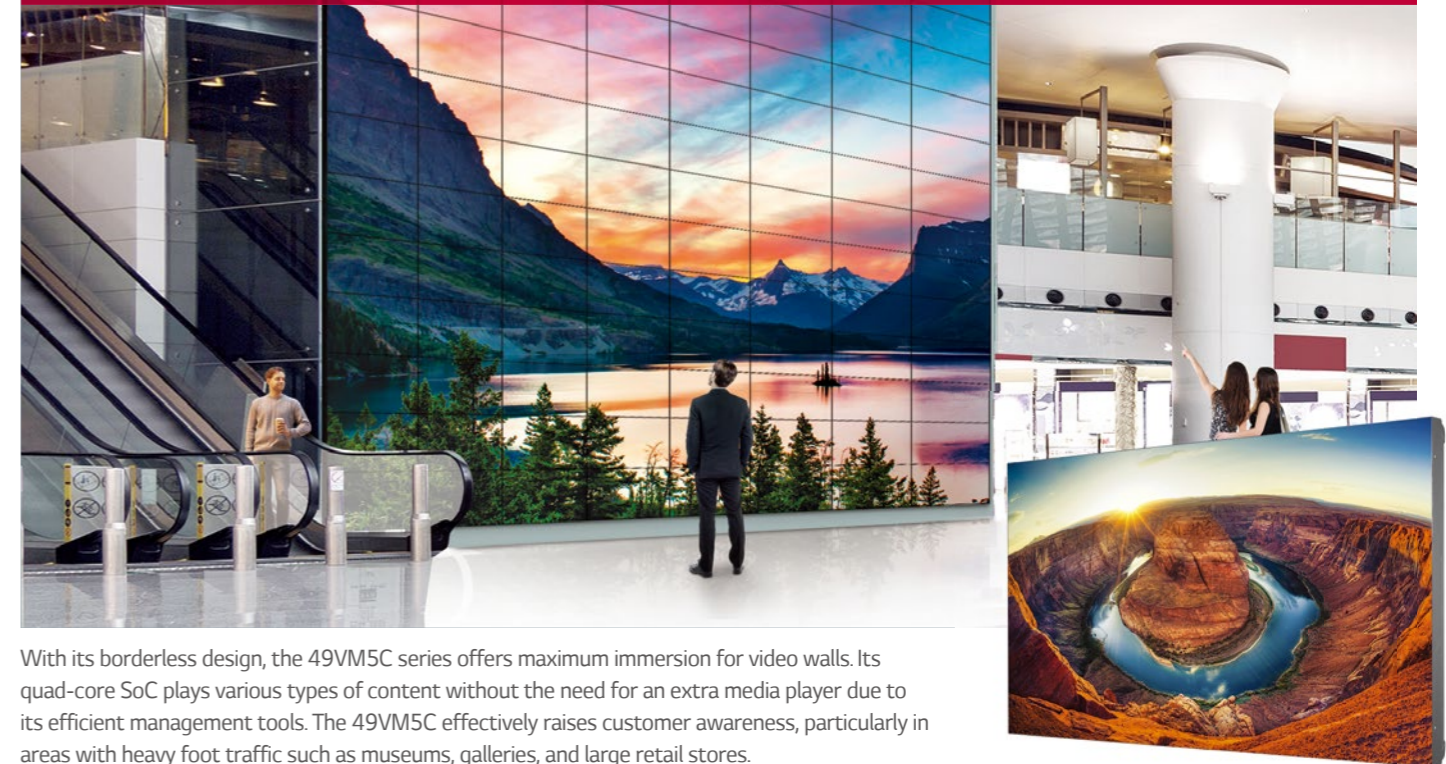
YouTube [youtube.com/c/LGCommercialDisplay](https://www.youtube.com/c/LGCommercialDisplay)

LG may make changes to specifications and product descriptions without notice. Copyright © 2016 LG Electronics Inc. All rights reserved. "LG Life's Good" is a registered trademark of LG Corp. The names of products and brands mentioned here may be the trademarks of their respective owners.



Artistic Immersion, Overwhelming Attractiveness

World Best Class Video Wall 49VM5C



With its borderless design, the 49VM5C series offers maximum immersion for video walls. Its quad-core SoC plays various types of content without the need for an extra media player due to its efficient management tools. The 49VM5C effectively raises customer awareness, particularly in areas with heavy foot traffic such as museums, galleries, and large retail stores.

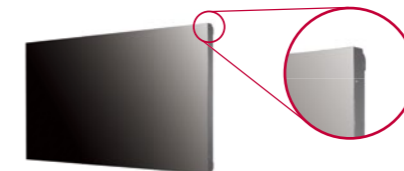
Key Features

Borderless Design



Narrow Bezel

Borderless design with its 0.9 mm even panel bezel* and 1.8 mm BtB (Bezel to Bezel)** size, verified by Nemko***, enables immersive and seamless viewing experiences on assembled video wall screens.



*Panel Bezel: The black matrix section where an image is not displayed on the front panel.
 **BtB (Bezel to Bezel): Panel Bezel + Panel Bezel (Borderless type, no metal bezel)
 ***Nemko (Nogerois Elektriske Materielkontroll) was established in 1933 as an institution for mandatory safety testing and national approval of electrical equipment to be marketed and sold in Norway. Since it was transformed into independent, self-owned foundation in 1991, it has provided worldwide testing and certification.



Smart Platform



Built-in SoC* and Synced Playback

The optimized built-in quad-core SoC in the 49VM5C can play various content formats and eliminates the need for an external media player. Using its built-in SoC, each display plays its video tile without lag for synchronized content playback.



*System-on-Chip

- CPU**
1.2 GHz Quad Core CPU
- Memory**
2.5 GB double data 3 (DDR3) 32 bit memory
- GPU**
550MHz video processor with full codec (WMV, MP4, HEVC, VP9, and H.264 capabilities)
- Internal Memory**
A storage of 8 GB (4 GB is occupied by system)

webOS

The webOS platform provides easy and convenient tools to create contents. LG's SDK* and technical supports make content development and management easier.



<http://developer.lge.com/webOSSignage>

*Software Development Kit

Artistic Immersion, Overwhelming Attractiveness

World Best Class Video Wall 49VM5C



Screen Size
49"

49VM5C

- Brightness: 49VM5C: 500 cd/m²
- Surface Treatment:
 - 49VM5C: Hard coating(3H), Anti-glare treatment of the front polarizer (Haze 10 %)
- Bezel: 0.9 mm (T/B/L/R even bezel)
- Depth:
 - 55VH7B/VM5B: 86.5 mm
 - 49VM5C: 86.2 mm
- Interface: HDMI / DVI / RGB / IR, Daisy-chain (DP, RS232C, RJ45)

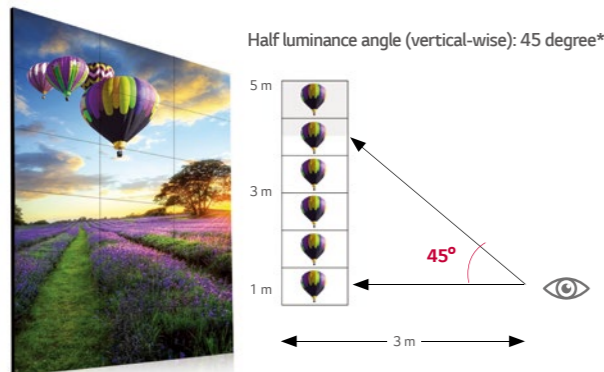


Key Features

Superior Picture Quality

Clear Viewing Angle

The 49VM5C ensures clear picture quality even when installed in stacks of more than four. This is very favorable for the quantity of video walls installed in large spaces.



*The angle from the center of the screen to have 50 % of the initial luminance.

Uniform Brightness

LG's LED backlight technology guarantees high uniformity in brightness to ensure a clear picture. On other screens, certain spots may appear darker than others, but the new 49VM5C generates high visibility and a consistent brightness across the whole screen.



Video Wall Image Creation

Through Video Wall Image Creation (VIC) technology, color and brightness differences are compensated in circuit part with an algorithm to make the panels into a same characteristic so that each video wall maintains the consistent white balance.

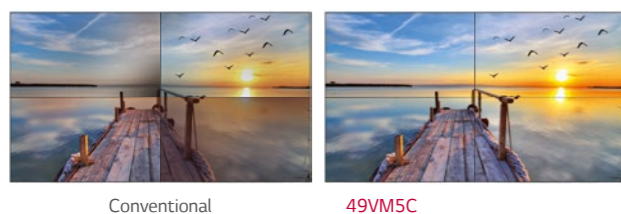


Image Gap Reduction

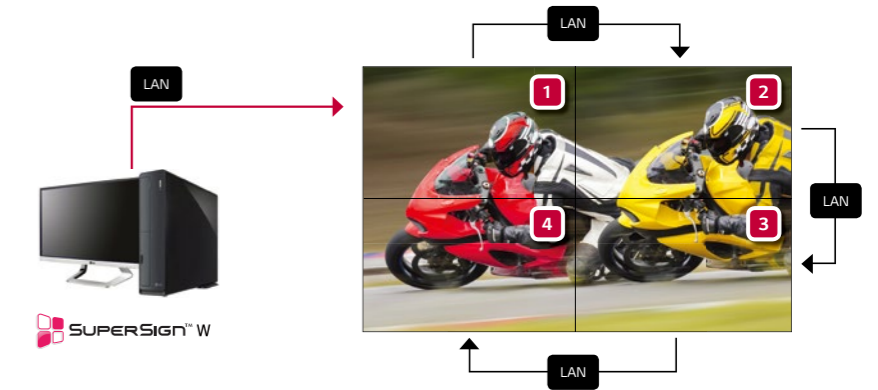
The 49VM5C includes an image improvement algorithm that can adjust to objects located in the boundary of bezel for a seamless viewing experience.



Enhanced Content Management

LAN Daisy Chain Performance

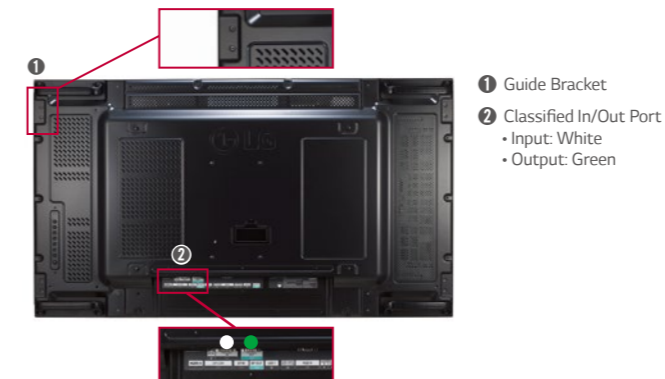
A LAN daisy chain allows you to execute commands to control and monitor the screens and even update their firmware.



Convenient Options

Guide Bracket / Classified Port

A guide bracket is an attachment that ensures the video wall remains flat. The classified in/out port prevents errors when connecting a daisy chain.



Control Buttons

With 8 control buttons, it's easy to operate various functions of the 49VM5C, such as controlling the OSD (On Screen Display) and changing the input source.



49"

1,075.6 x 605.8 x 86.2 mm

17.5 kg

