



# Samsung QMF Series SMART Signage

Deliver your business message in ultra-realistic detail

## Highlights

- Deliver your business messaging 24/7 in Ultra-High-Definition(UHD) resolution with ultimate picture quality designed for a commercial environment
- Experience true UHD with DisplayPort® (DP) 1.2 that supports a 60 Hz refresh rate
- Install the display in portrait orientation easily with pivot mode
- Enjoy a full-UHD display line-up (49", 55", 65",75",98")
- Ultimate display quality with non-glare panel in bright conditions (ample light or sunlight)

## Bring the next generation of UHD picture quality to your commercial environment

Samsung QMF Series SMART Signage features a new design and delivers 3,840 x 2,160 resolution, multi-format PIP support, DP1.2 support, set-back box (SBB) support, portrait or landscape orientation and reliable 24/7 operation for amazing flexibility in commercial settings.

The UHD displays deliver a super-crisp image with high pixel density that is perfect for displaying even the smallest details of photos and videos in a hyper-realistic and immersive visual experience.

Non-glare panels come as standard to ensure outstanding performance in bright conditions. Boasting a narrow-bezel configuration, the standalone displays offer a compact solution to environments limited by space or lighting.

Available in configurations spanning 48" to 98", the UHD line-up is designed to deliver superior image quality in all environments. The versatile range of displays is specially configured to suit any business application.

For example, retail stores can leverage Samsung QMF Series with UHD to improve their brand image and showcase products in sharp detail, while corporations and arena or museum security centers can use the high-resolution displays to enhance security with stable and vivid content playback.



## Attract customers and improve brand identity with UHD lifelike images and picture quality

QMF Series delivers four times the FHD resolution on the same screen area, resulting in the most accurate recreation of details possible. Text that displays on QMF Series in UHD is super-crisp due to its high pixel density. High-detail visuals, such as photos and videos, are visible with the smallest details for a hyper-realistic and immersive visual experience. In addition, customers can replace older video walls composed of smaller FHD displays with a single large QMF Series display to eliminate the bezels and produce a seamless view of the content. The resolution made up of the four FHD displays is singlehandedly covered by one UHD display.

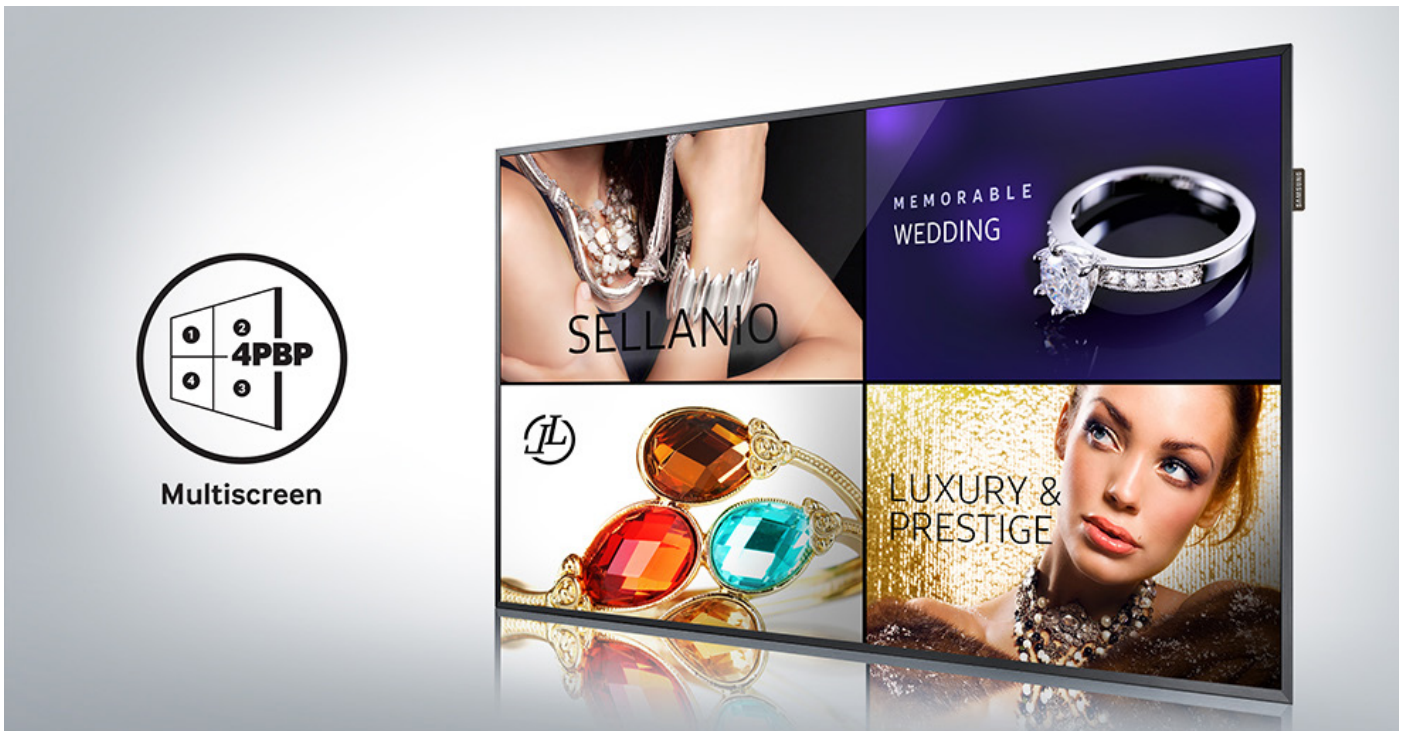
Resolution	Width (pixels)	Height (pixels)
FHD Samsung Conventional	1,920	1,080
UHD Samsung QMF SMART Signage	3,840	2,160

**UHD**

## Display four times the FHD content on a single multiscreen for greater visual impact

Now, you can provide more information through a smaller number of displays. UHD offers four times the resolution of FHD, which means that you can display the equivalent of four FHD content screens on a single UHD screen. QMF Series features a wide array of connectivity options, including the ability to display content from four separate input devices on the same screen without the need to first merge the content on a separate PC. With QMF Series, no special third-party components are required.

Various PIP and split-screen scenarios are possible, far beyond just four equally separated rectangles. This flexibility enables dynamic and efficient usage scenarios, such as the display of a video conferencing system on a large part of the screen, along with reference documents from a different device on another screen area for meeting attendees, or a product image display next to a specifications list in a retail store.



## Choose the optimal display orientation with pivot mode

To meet the demands of traditional commercial environments, digital signage is often installed in portrait mode. Thus, it is critical that the digital signage supports portrait installation to fit to the aesthetics of the setting while still delivering the dynamic qualities of digital signage. QMF Series offers pivot mode that allows them to be installed in either landscape or portrait orientation to suit the environment's needs.



## Enjoy seamless video playback with QMF support for DP1.2

QMF Series natively supports a high 60 Hz refresh rate that ensures seamless video playback and eliminates the choppy visual experience often observed at a lower refresh rate. The QMF Series supports DP1.2 connectivity, which is capable of streaming UHD video content at a refresh rate of 60 Hz, delivering a true UHD experience.

## Create a streamlined display area with the Samsung SBB extension for streamed UHD content

Due to the relative novelty of UHD in commercial display settings, few media players currently offer support for UHD streaming. To meet this demand, Samsung launched an optional UHD-capable SBB, which can attach to the back of the QMF Series. The simple installation of this SBB eliminates unnecessary wire clutter and also removes the need to create separate housing for the media player.



# Specifications

## QMF



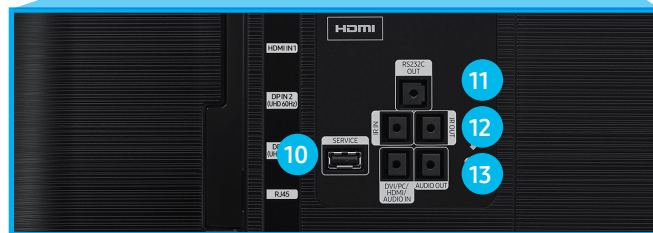
- QMF ( 49" / 55" / 65" / 75" / 98" )



## Connectors



1. RS232C IN
2. DVI/PC/MAGICINFO IN
3. HDMI 4
4. HDMI 3
5. HDMI 2
6. HDMI 1
7. DP IN 2 (UHD 60Hz)
8. DP IN 1 (UHD 60Hz)
9. RJ45
10. SERVICE
11. RS232C OUT
12. IR IN / IR OUT
13. DVI/PC/HDMI AUDIO IN / AUDIO OUT



# Specifications

## QMF ( 49" / 55" / 65")



### Specifications

Model		QM49F	QM55F	QM65F	
Panel	Diagonal Size	49"	55"	65"	
	Type	60Hz E-LED BLU	60Hz E-LED BLU	60Hz E-LED BLU	
	Resolution	3840x2160(16:9)	3840x2160(16:9)	3840x2160(16:9)	
	Pixel Pitch (mm)	0.105 x 0.315 (mm)	0.105 x 0.315 (mm)	0.105 x 0.315 (mm)	
	Active Display Area	1073.78(H) x 604.0(V)	1209.60(H) x 680.40(V)	1438.48(H) x 814.52(V)	
	Brightness(Typ.)	500nit	500nit	500nit	
	Contrast Ratio (Typ.)	4700:1	4700:1	4700:1	
	Viewing Angle(H/V)	178/178	178/178	178/178	
	Response Time (G to G)	8ms (Typ)	8ms (Typ)	8ms (Typ)	
	Display Colors	16.7M(True Display) 1.07B(Ditherd 10bit)	16.7M(True Display) 1.07B(Ditherd 10bit)	16.7M(True Display) 1.07B(Ditherd 10bit)	
	Color Gamut	72%	72%	72%	
	Operation Hour	24/7	24/7	24/7	
	Haze	25%	25%	25%	
	Display	Dynamic C/R	Mega	Mega	Mega
H-Scanning Frequency		30 ~ 81kHz	30 ~ 81kHz	30 ~ 81kHz	
V-Scanning Frequency		48 ~ 75Hz	48 ~ 75Hz	48 ~ 75Hz	
Maximum Pixel Frequency		148.5MHz	148.5MHz	148.5MHz	
Sound	Speaker Type	Built in Speaker (10W + 10W)	Built in Speaker (10W + 10W)	Built in Speaker (10W + 10W)	
Connectivity	INPUT	RGB	DVI-I(D-Sub Common), Display Port 1.2 (2)	DVI-I(D-Sub Common), Display Port 1.2 (2)	DVI-I(D-Sub Common), Display Port 1.2 (2)
		VIDEO	HDMI 1.4 (4)	HDMI 1.4 (4)	HDMI 1.4 (4)
		AUDIO	Stereo mini Jack	Stereo mini Jack	Stereo mini Jack
		USB	USB (S/W update only)	USB (S/W update only)	USB (S/W update only)
	OUTPUT	RGB	N/A	N/A	N/A
		VIDEO	N/A	N/A	N/A
		AUDIO	Stereo mini Jack	Stereo mini Jack	Stereo mini Jack
		Power Out	N/A	N/A	N/A
	EXTERNAL CONTROL	RS232C(in/out), RJ45	RS232C(in/out), RJ45	RS232C(in/out), RJ45	
	EXTERNAL SENSOR	IR	IR	IR	
Tuner	N/A	N/A	N/A		
Power	Type	Internal	Internal	Internal	
	Power Supply	AC 100 - 240 V~ (+/- 10 %), 50/60 Hz	AC 100 - 240 V~ (+/- 10 %), 50/60 Hz	AC 100 - 240 V~ (+/- 10 %), 50/60 Hz	
	Power Consumption	On mode [W]	100(Typical), 140(Rating), 154(Max)	110(Typical), 150(Rat- ing),165(Max)	138(Typical), 180(Rating), 198(Max)
		Sleep mode	less than 0.5W	less than 0.5W	less than 0.5W
Off mode		less than 0.5W	less than 0.5W	less than 0.5W	



# Specifications

## QMF ( 49" / 55" / 65" )



### Specifications

Model		QM49F	QM55F	QM65F	
Mechanical Spec	Dimension(mm)	Set	1099.4 x 634.0 x 36.8	1235.3 x 710.4 x 36.8	1456.1 x 835.6 x 37.5
		Package	1195.0 x 721.0 x 177.0	1335.0 x 812.0 x 182.0	1571 X 949 X 212
	Weight (kg)	Set	13.6	16.8	23.1
		Package	18.4	22.4	31.6
	VESA Mount		400x400	400x400	400x400
	Protection Glass		N/A	N/A	N/A
	Stand Type		Foot Stand (Optional)	Foot Stand (Optional)	Foot Stand (Optional)
	Bezel Width (Top/Side/Bot) (mm)		11.0/11.0/12.0	11.0/11.0/12.0	12.0/12.0/12.0
Operation	Operating Temperature		0°C~ 40°C	0°C~ 40°C	0°C~ 40°C
	Humidity		10~80%	10~80%	10~80%
Feature	Key		UHD LFD Display	UHD LFD Display	UHD LFD Display
	Special	H/W	Temperature Sensor, Pivot Display, Clock Battery(80hrs Clock Keeping), Built in Speaker(10W 2ch), IP5x	Temperature Sensor, Pivot Display, Clock Battery(80hrs Clock Keeping), Built in Speaker(10W 2ch), IP5x	Temperature Sensor, Pivot Display, Clock Battery(80hrs Clock Keeping), Built in Speaker(10W 2ch), IP5x
		S/W	FHD 4 PBP Support (2/3/4 PBP), Auto Source Switching & Recovery, LFD Home UI, Button Lock, DHCP with RJ45 MDC, Hot key option, Plug&Play (Initial Setting)	FHD 4 PBP Support (2/3/4 PBP), Auto Source Switching & Recovery, LFD Home UI, Button Lock, DHCP with RJ45 MDC, Hot key option, Plug&Play (Initial Setting)	FHD 4 PBP Support (2/3/4 PBP), Auto Source Switching & Recovery, LFD Home UI, Button Lock, DHCP with RJ45 MDC, Hot key option, Plug&Play (Initial Setting)
	Internal Player (Embedded H/W)	Processor	N/A	N/A	N/A
		On-Chip Cache Memory			
		Clock Speed			
		Main Memory Interface			
		Graphics			
		Storage (FDM)			
		Multimedia			
IO Ports					
Operating System					
Certification	Safety		60950-1	60950-1	60950-1
	EMC		Class A	Class A	Class A
	Environment		ENERGY STAR 7.0 (USA)	ENERGY STAR 7.0 (USA)	ENERGY STAR 7.0 (USA)
Accessories	Included		Quick Setup Guide, Warranty Card, Power Cord, Remote Controller, Batteries	Quick Setup Guide, Warranty Card, Power Cord, Remote Controller, Batteries	Quick Setup Guide, Warranty Card, Power Cord, Remote Controller, Batteries
	Optional	Stand	STN-L4655E	STN-L4655E	STN-L6500E
		Mount	WMN4270SD	WMN4270SD	WMN6575SD
		Specialty	-	-	-
		Media Player	SBB-DA/DI	SBB-DA/DI	SBB-DA/DI